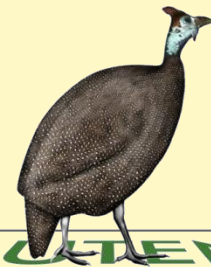




COMMUNITY CONSERVATION

NEW CONSERVANCIES

- **iHlathi Melrose-Birdhaven:**
 - Formed to develop & maintain a 'Green Corridor' between the urban nodes of Rosebank & Melrose Arch
 - Urban Forest Survey being undertaken
- **Chartwell Country Estates:**
 - Formed wetland sub committee
 - Eradication of pom-pom weed
 - Erect bat & owl boxes



Our Office!!

- 2000 environmental, historical South Africa and international sets of books irreplaceable from SA Railways and Harbours
- Plus the two living antiques!!! and a young man (not coping with the grannies)







Cullinan

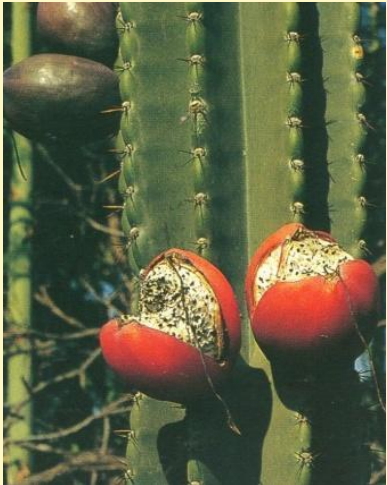
Invasive Plants and Declared weeds

- Biological Control
- Mechanical and Herbicide Control





CULLINAN WEED POSTER





Drumblade Conservancy

Nature's Little Piece of Heaven

- Youth Division to educate and involve young people
- Bird Count now at 185
- Control and eradication of runaway veld fires



A Fundraiser by IFC for **Alyssa's** Save the Rhino Campaign

Benefiting towards a world worthy of our children www.narso.org.za

All proceeds will go to Alyssa's Campaign

Sunday 26th July
10am to 2pm at Molly Malone's in Fourways

Free entry
Breakfast @ R55 per person

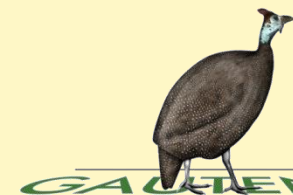
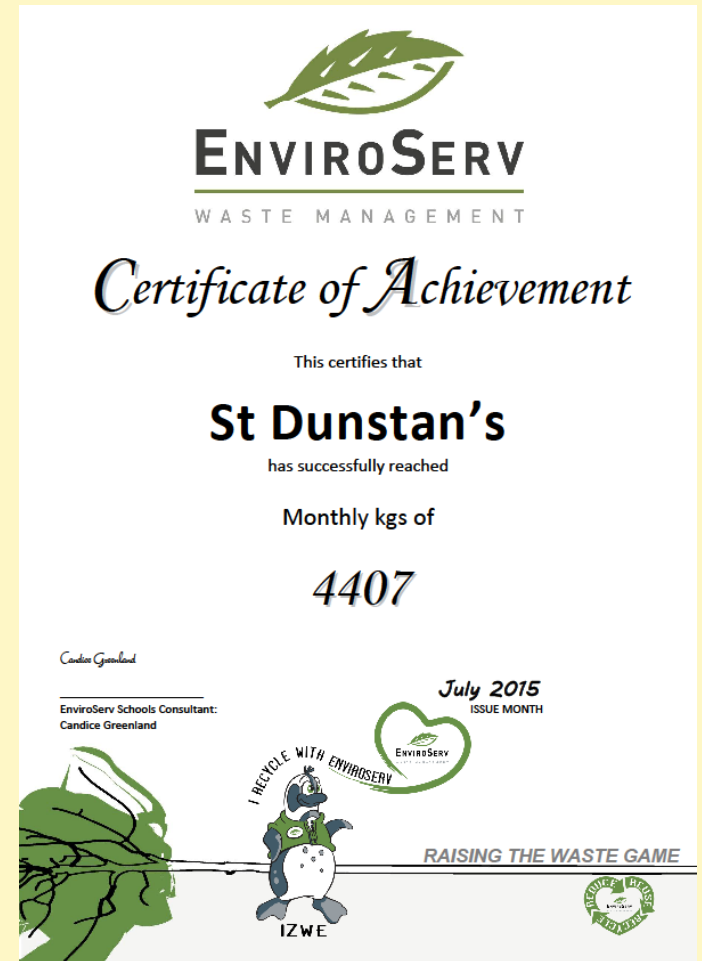
- Meet Alyssa
- Art for Sale
- Raffles
- Children's entertainment & games

For info call: 071 921 5872



ST DUNSTAN'S RECYCLING FOR COMMUNITY SERVICE PROJECT

In 2012 the Conservancy started a programme where bottle tops and bread tags were collected and recycled but instead of getting money we were issued a wheelchair
150 kg bottle tops = 1 chair and
50 kg of bread tags = 1 chair



GAUTENG
Conservancy and Stewardship Association

THORNTREE

- Anti poaching
- Snake removal
- Tortoise relocation
- Baboon spider released
- Fire fighting



Current EIA's

- Ngwenya Mining
- K77 Road
- Walkerville Petrol stations, 16/32
- Waterval Solar Plant

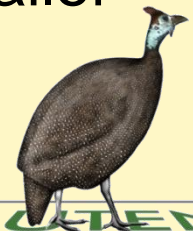
WALKERVILLE AGRICULTURAL SHOW



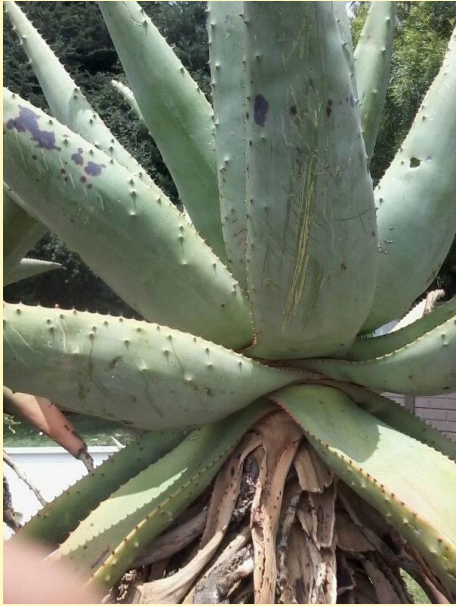
KEEP SOUTH AFRICA CLEAN !



Thanks to the Plastics Federation of South Africa and to Optiplex Hire for the use of their trailer



Theft of Aloe Marlothi From the Magaliesberg



Hypoxis hemerocallidea removed for Muthi Trade



HERITAGE SITES



Jan Smuts House Museum, Irene



Cullinan



Suikerbos Nature Reserve

The 'Jewel' of Gauteng

- Closed for many months
- Water pumps not working
- Fences not repaired
- Fire damage
- Working for fire not working
- Overnight huts vandalised
- Protea hotels not given a new lease for Kareekloof
- Kareekloof vandalised
- Applications for mining in buffer zone





Contact Information

- Northern Region **Joan du Toit** 082 681 5122
- Western Region **John Wesson** 083 444 7649
- Central Region **Cheryl Dehning** 083 376 1734
- Eastern Region **Anne Mearns** 073 210 3340
- Southern Region **Reg Humphreys** 083 235 1529

Office: 016 590 4228 09h00-14h00

Web site: www.conservancies.org

E-mail: conservancies@conservancies.org

Postal: PO Box 1552 Walkerville 1876